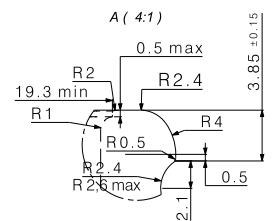
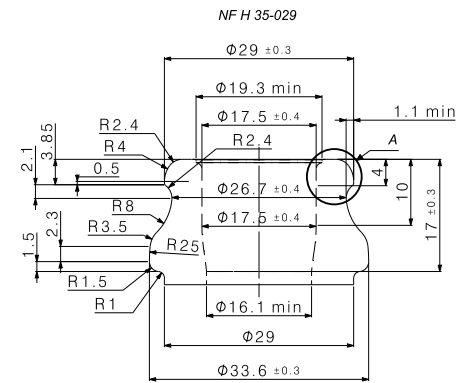
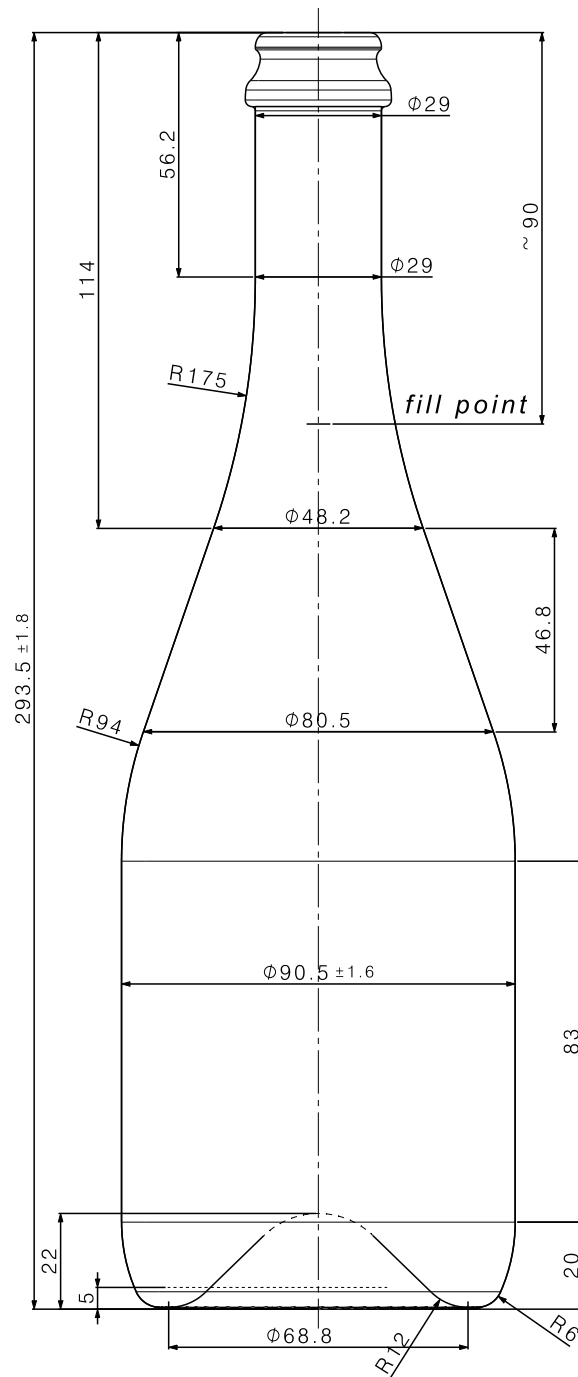


CHAMPAGNE

Monro Light



KMC
G L A S S



- ⊘ Champagne Monro Light
- ⊘ Weight - 681 g
- ⊘ Filling CAP - 750 ml
- ⊘ Color - Olive Green; Flint
- ⊘ Diameter - 90.5 ± 1.6
- ⊘ Entrance bore diameter - 17.5

www.kmc.glass
sales@kmc.glass

KMC
GLASS